

LCMS Chiral Separation of Haloxyfop by Lux 3u Cellulose-3

Column: Lux[®] 3 μ m Cellulose-3, LC Column 150 x 4.6 mm, Ea

Dimensions: 150 x 4.6 mm ID

Order No: 00F-4492-E0

Elution Type: Isocratic

Eluent A: 0.1% Formic acid/Water

Eluent B: ACN

Gradient Profile:	Step No.	Time (min)	Pct A	Pct B
	1	0	55	45

Flow Rate: 0.2 mL/min

Col. Temp.: ambient

Detection: Tandem Mass Spec (MS-MS) @ (ambient)

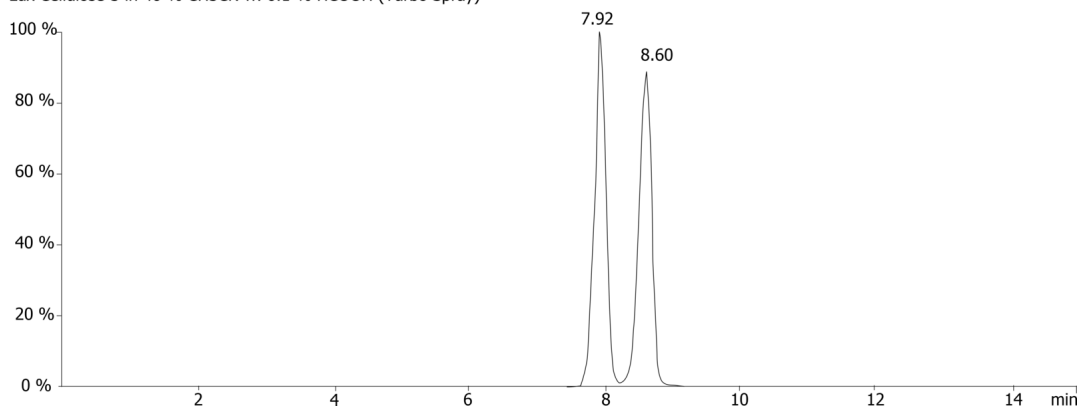
Detector Info: SCIEX
21514



Products used in this application:



XIC of + MRM 368.9/237.7 Da ID: Haloxyfop
Lux Cellulose-3 in 46 % CH₃CN w. 0.1 % HCOOH (Turbo Spray)



ANALYTES:

1 Haloxyfop

Retention Time: 7.92 min

2 Haloxyfop

Retention Time: 8.6 min

