

# HPLC Application

ID No.: 21521

## Reduced Human Ig-G1 on Aeris: LC-UV Separation

**Column:** Aeris<sup>™</sup> 3.6 µm WIDEPORE XB-C8 200 Å, LC Column 100 x 2.1 mm, Ea

**Dimensions:** 100 x 2.1 mm ID

**Order No:** 00D-4481-AN

**Elution Type:** Gradient

**Eluent A:** 0.1% TFA in Water

**Eluent B:** IPA/AcCN/0.1% TFA in water 80:10:10

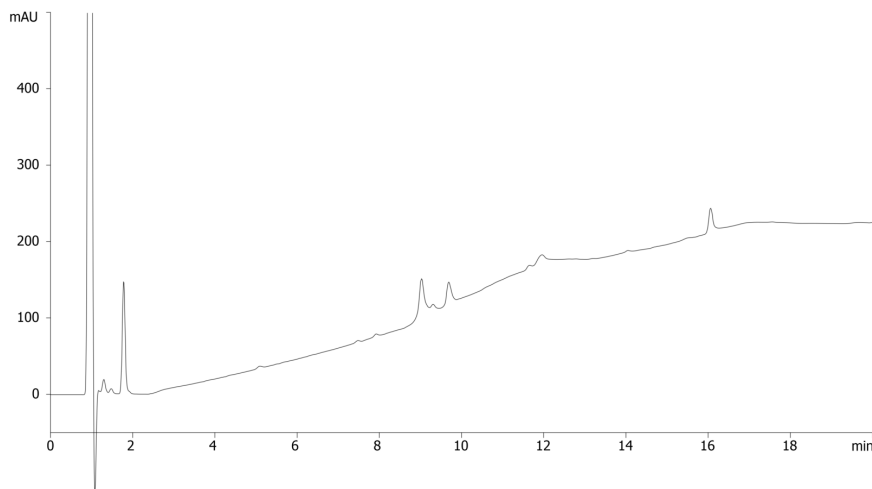
Gradient Profile:	Step No.	Time (min)	Pct A	Pct B
	1	0	97	3
	2	5	60	40
	3	15	28	72
	4	19	24	76
	5	19.01	3	97
	6	20	3	97

**Flow Rate:** 0.4 mL/min

**Col. Temp.:** 70 °C

**Detection:** UV-Vis Abs.-Diode Array (PDA) @ 214 nm (ambient)

21521



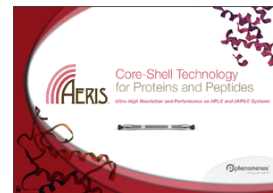
### ANALYTES:

- 1 Reduced Heavy Chain Human IgG1

Retention Time: 8.9 min

- 2 Light Chain IgG1

Retention Time: 9.7 min



Products used in this application:

