

HPLC Application

ID No.: 21831

Simeconazole on Lux 5 μ m Cellulose-2 in RP

Column: Lux[®] 5 μ m Cellulose-2, LC Column 250 x 4.6 mm, Ea
Dimensions: 250 x 4.6 mm ID
Order No: 00G-4457-E0
Elution Type: Isocratic
Eluent A: MeOH / 20mM NH₄HCO₃+0.1%DEA (80:20) with DEA (0.1%) in buffer
Gradient

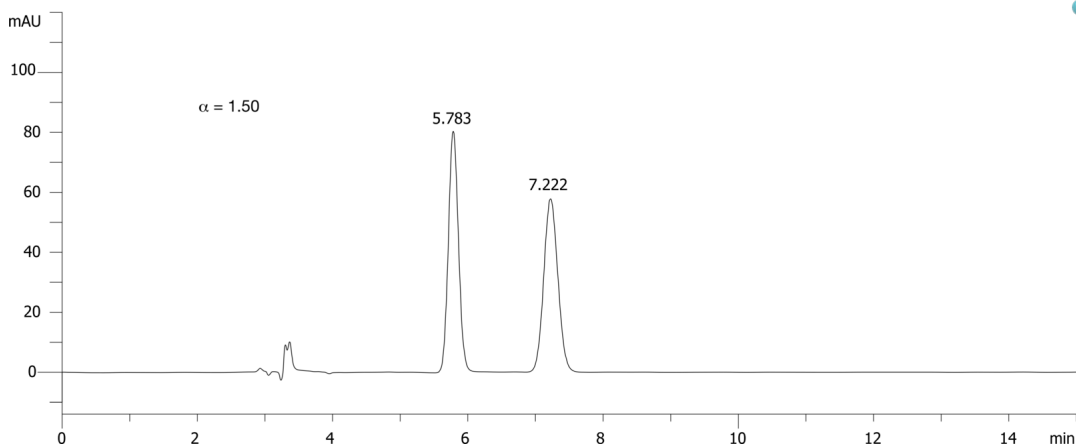
Step No.	Time (min)	Pct A
1	0	100

Profile:
Flow Rate: 1 mL/min
Col. Temp.: ambient
Detection: UV-Vis Abs.-Variable Wave.(UV) @ 220 nm (ambient)

21831



Products used in this application:



ANALYTES:

- 1 Simeconazole
Retention Time: 5.783 min
- 2 Simeconazole
Retention Time: 7.222 min