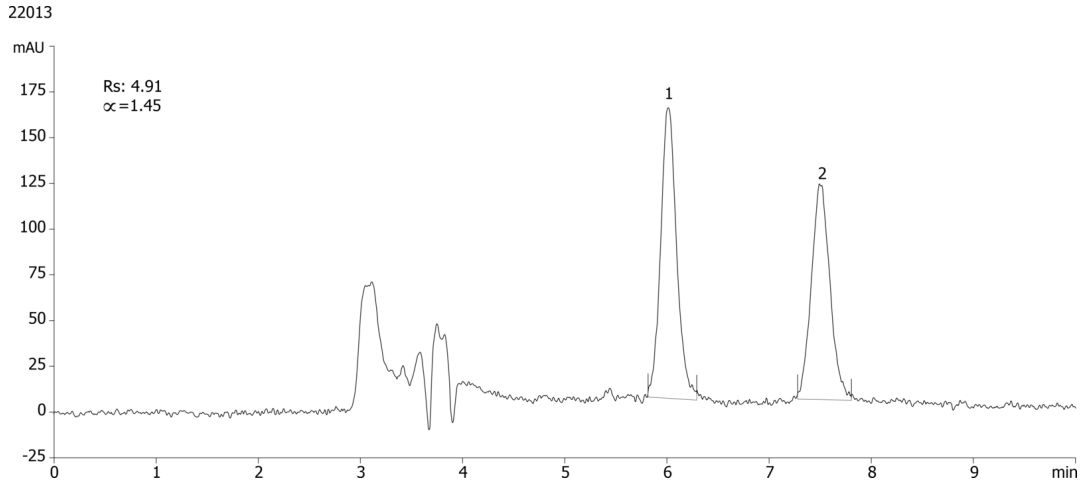


Ifenprodil on Lux 5µm Amylose-2 in NP

Column: N/A
Dimensions: N/A
Order No: N/A
Elution Type: N/A
Eluent A: Hexane/EtOH (80:20) 0.1 % DEA
Gradient

Step No.	Time (min)	Pct A
1	0	100

Profile:
Flow Rate: 1 mL/min
Col. Temp.: ambient
Detection: UV-Vis Abs.-Variable Wave.(UV) @ 220 nm (ambient)



ANALYTES:

- 1** Ifenprodil
Retention Time: 6.013 min
- 2** Ifenprodil
Retention Time: 7.495 min

