

Mycotoxins extracted from corn using roQ by LC/MS/MS (Negative mode)

Column: Kinetex® 2.6 µm XB-C18 100 Å, LC Column 50 x 2.1 mm, Ea

Dimensions: 50 x 2.1 mm ID

Order No: 00B-4496-AN

Elution Type: Gradient

Eluent A: 5 mM ammonium acetate w/ 0.5% acetic acid

Eluent B: 5 mM ammonium acetate in methanol w/ 0.5% acetic acid

Gradient Profile:	Step No.	Time (min)	Pct A	Pct B
	1	0	95	5
	2	2	95	5
	3	5	20	80
	4	5.2	2	98
	5	8	2	98

Flow Rate: 0.45 mL/min

Col. Temp.: ambient

Detection: Tandem Mass Spec (MS-MS) @ (ambient)

Detector Info: API 5000

Analyst Note: roQ extraction:

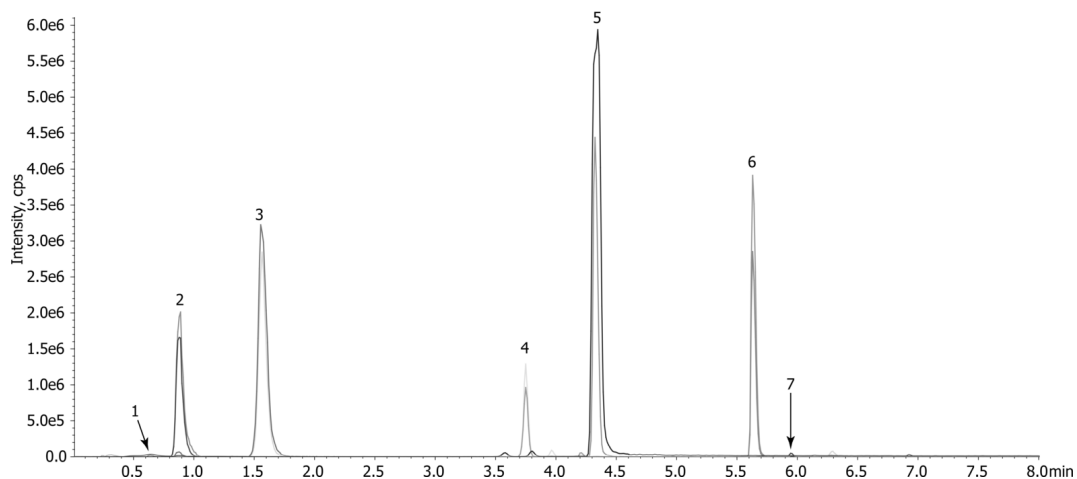
- 1) 5 g of corn is extracted using KSO-8909 with 10 mL of water and 10 mL of ACN with 1.0 % formic acid.
2. KSO-8924 is used for dSPE clean up.



Products used in this application:



22712



ANALYTES:

- 1** Patulin 152.9>108.9/81.0
Retention Time: 0.65 min
- 2** Nivalenol 371>281.0/59.0
Retention Time: 0.88 min
- 3** Deoxynivalenol 355>295.0/58.6
Retention Time: 1.57 min
- 4** Fusarenon-X 413>59.1/353.1
Retention Time: 3.76 min
- 5** 3-Acetyldeoxynivalenol 397>59.0/307.0
Retention Time: 4.34 min
- 6** Zearalenone 317>175.0/272.9
Retention Time: 5.64 min
- 7** Verruculogen 510.1>166.2/305.9
Retention Time: 5.96 min

