

# HPLC Application

ID No.: 22730

## Phospholipid Removal Novum EtoAc Elution(Zoomed)

**Column:** Kinetex<sup>®</sup> 2.6 μm C18 100 Å, LC Column 50 x 2.1 mm, Ea

**Dimensions:** 50 x 2.1 mm ID

**Order No:** 00B-4462-AN

**Elution Type:** Gradient

**Eluent A:** 0.1% Formic Acid in Water

**Eluent B:** 0.1% Formic Acid in Methanol

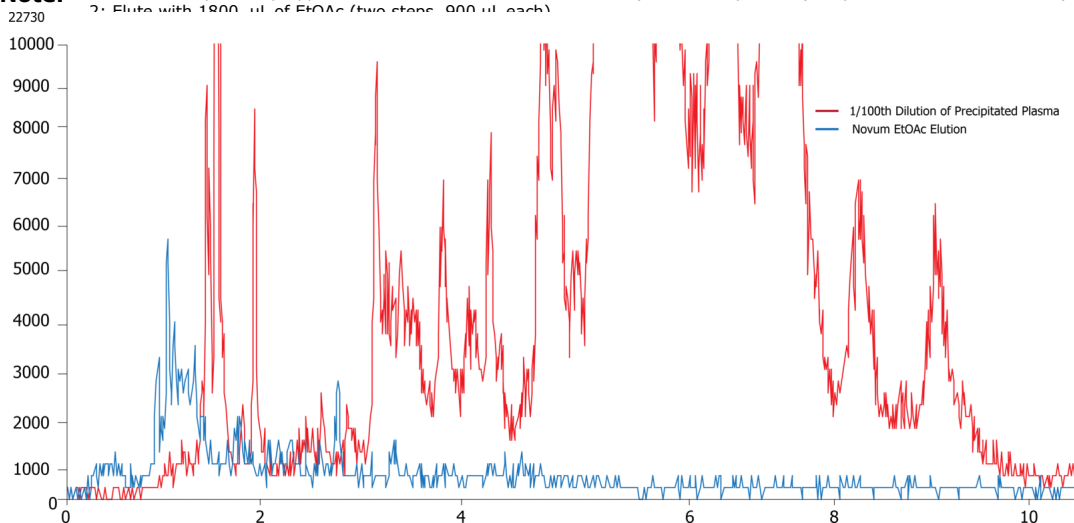
| Gradient Profile: | Step No. | Time (min) | Pct A | Pct B |
|-------------------|----------|------------|-------|-------|
|                   | 1        | 0          | 40    | 60    |
|                   | 2        | 0.5        | 5     | 95    |
|                   | 3        | 15.5       | 5     | 95    |
|                   | 4        | 15.51      | 40    | 60    |
|                   | 5        | 19.5       | 40    | 60    |

**Flow Rate:** 400 μL/min

**Col. Temp.:** ambient

**Detection:** Mass Spectrometer (MS) @ 184 amu (425 °C)

**Analyst Note:** Extracted sample was prepped with Phenomenex Novum SLE Plate (400 uL sample Load) Step 1: 400 uL Dilute Plasma (50/50) to the plate. Step 2: Elute with 1800 uL of EtOAc (two steps, 900 uL each)



### ANALYTES:

- 1 Phospholipid Profile 184.0/184.0 (In-Source)



Products used in this application:

