

# HPLC Application

ID No.: 22740

## Nutraceutical profile using Kinetex 5u XB-C18 150x4.6mm

**Column:** Kinetex<sup>®</sup> 5 $\mu$ m XB-C18 100 Å, LC Column 150 x 4.6 mm, Ea

**Dimensions:** 150 x 4.6 mm ID

**Order No:** 00F-4605-E0

**Elution Type:** Gradient

**Eluent A:** 20mM Sodium phosphate pH 2.3

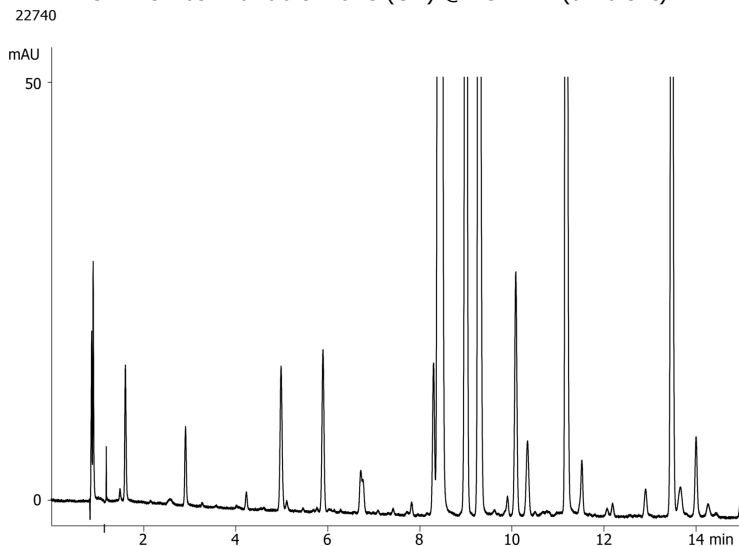
**Eluent B:** Acetonitrile

Gradient Profile:	Step No.	Time (min)	Pct A	Pct B
	1	0	95	5
	2	20	50	50

**Flow Rate:** 1.5 mL/min

**Col. Temp.:** 30 °C

**Detection:** UV-Vis Abs.-Variable Wave.(UV) @ 254 nm (ambient)



### ANALYTES:

- 1 Nutraceutical extract



Products used in this application:

