

Neonicotinoids honey extract by LC/MS/MS using roQ and Kinetex Biphenyl

Column: Kinetex® 2.6 µm Biphenyl 100 Å, LC Column 50 x 2.1 mm, Ea

Dimensions: 50 x 2.1 mm ID

Order No: 00B-4622-AN

Elution Type: Gradient

Eluent A: 0.1% Formic acid in water

Eluent B: 0.1% Formic acid in acetonitrile

Gradient Profile:	Step No.	Time (min)	Pct A	Pct B
	1	0	95	5
	2	10	30	70
	3	12	30	70
	4	12.1	95	5
	5	14.1	95	5

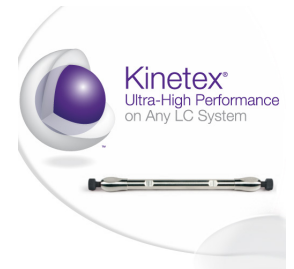
Flow Rate: 0.5 mL/min

Col. Temp.: ambient

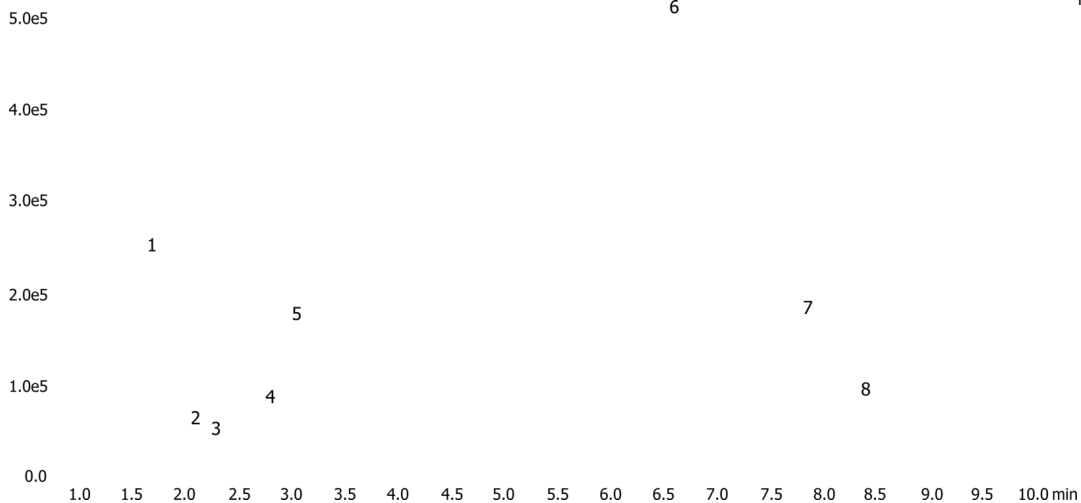
Detection: Tandem Mass Spec (MS-MS) @ (ambient)

Detector Info:

SCIEX



Products used in this application:



ANALYTES:

- 1 Nitenpyram 270.99>224.9
Retention Time: 1.65 min
- 2 Thiamethoxam 291.94>210.90
Retention Time: 2.15 min
- 3 Clothianidin 249.91>168.80
Retention Time: 2.2 min
- 4 Imidacloprid 255.95>208.90
Retention Time: 2.79 min
- 5 Acetamiprid 222.93>126.00
Retention Time: 3.03 min
- 6 Azoxystrobin 404.04>372.10
Retention Time: 6.6 min
- 7 Coumaphos 362.93>226.80
Retention Time: 7.85 min
- 8 Chlorpyrifos 349.86>197.70
Retention Time: 8.4 min

