

# HPLC Application

ID No.: 22768

## Loading Study using Kinetex 5u EVO C18 AXIA Packed 150x21.2mm

**Column:** Kinetex<sup>®</sup> 5 $\mu$ m EVO C18 100 Å, AXIA Packed LC Column 150 x 21.2 mm, Ea

**Dimensions:** 150 x 21.2 mm ID

**Order No:** 00F-4633-P0-AX

**Elution Type:** Gradient

**Eluent A:** Water with 0.1% TFA

**Eluent B:** Acetonitrile with 0.1% TFA

Gradient Profile:	Step No.	Time (min)	Pct A	Pct B
	1	0	95	5
	2	5	5	95

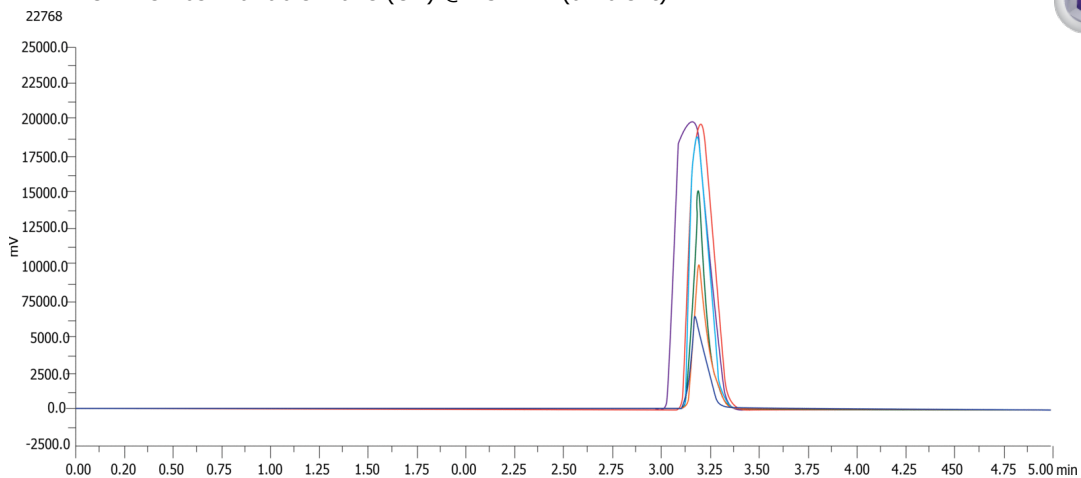
**Flow Rate:** 25 mL/min

**Col. Temp.:** ambient

**Detection:** UV-Vis Abs.-Variable Wave.(UV) @ 254 nm (ambient)



Products used in this application:



### ANALYTES:

- 1 Amitriptyline

