

## Degraded Human Insulin on Yarra 1.8 µm SEC-X150

**Column:** Yarra 1.8u SEC-X150, LC Column 150 x 4.6 mm, Ea

**Dimensions:** 150 x 4.6 mm ID

**Order No:** 00F-4631-E0

**Elution Type:** Isocratic

**Eluent A:** 1g/L L-Arginine in water

**Eluent B:** Acidic Acid

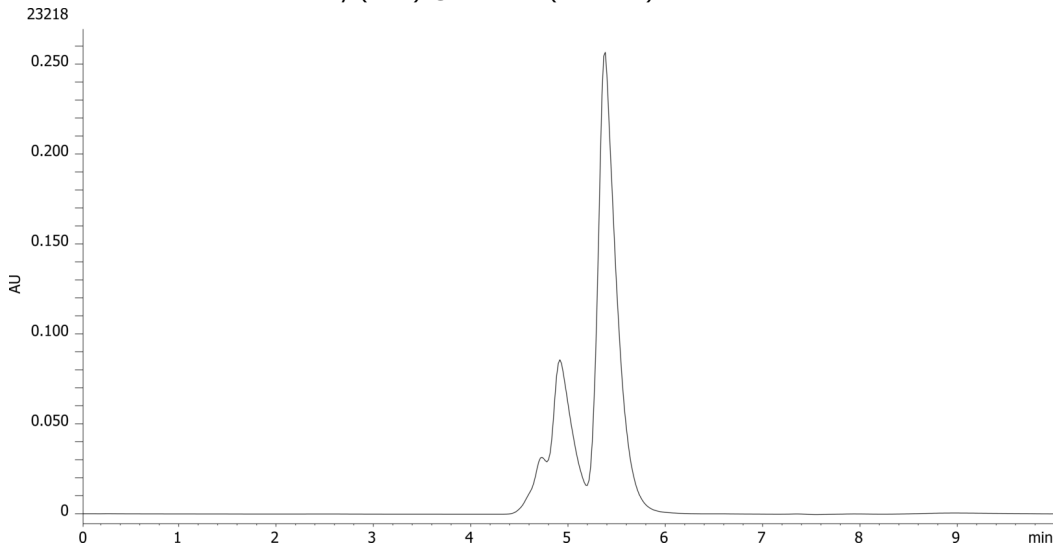
**Eluent C:** Acetonitrile

Gradient Profile:	Step No.	Time (min)	Pct A	Pct B	Pct C
	1	0	65	15	20

**Flow Rate:** 0.2 mL/min

**Col. Temp.:** ambient

**Detection:** UV-Vis Abs.-Diode Array (PDA) @ 276 nm (ambient)



### ANALYTES:

- 1** Aggregates  
Retention Time: 4.735 min
- 2** Aggregates  
Retention Time: 4.919 min
- 3** Insulin  
Retention Time: 5.38 min



Products used in this application:

