

Yarra 1.8 µm SEC-X150, Test Mix

Column: Yarra 1.8u SEC-X150, LC Column 150 x 4.6 mm, Ea

Dimensions: 150 x 4.6 mm ID

Order No: 00F-4631-E0

Elution Type: Isocratic

Eluent A: 0.1 M Sodium Phosphate, pH 6.8

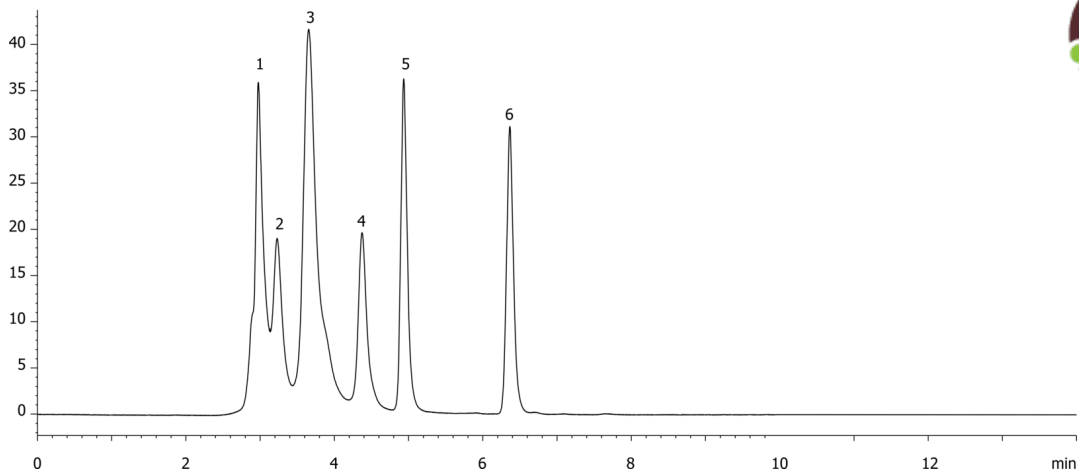
| Gradient Profile: | Step No. | Time (min) | Pct A |
|-------------------|----------|------------|-------|
| | 1 | 0 | 100 |

Flow Rate: 0.3 mL/min

Col. Temp.: ambient

Detection: UV-Vis Abs.-Variable Wave.(UV) @ 280 nm (ambient)

23243



Products used in this application:



ANALYTES:

- 1** Thyroglobulin
Retention Time: 2.976 min
- 2** IgA
Retention Time: 3.229 min
- 3** IgG
Retention Time: 3.654 min
- 4** Ovalbumin
Retention Time: 4.373 min
- 5** Myoglobin
Retention Time: 4.934 min
- 6** Uridine
Retention Time: 6.364 min

