

HPLC Application

ID No.: 23439

Organic acids by LCMS using Luna Omega 1.6u C18 50x2.1mm

Column: Luna Omega 1.6 um C18 100 Å, LC Column 50 x 2.1 mm, Ea

Dimensions: 50 x 2.1 mm ID

Order No: 00B-4742-AN

Elution Type: Gradient

Eluent A: 0.1 Formic Acid in Water

Eluent B: 0.1% Formic Acid in Methanol

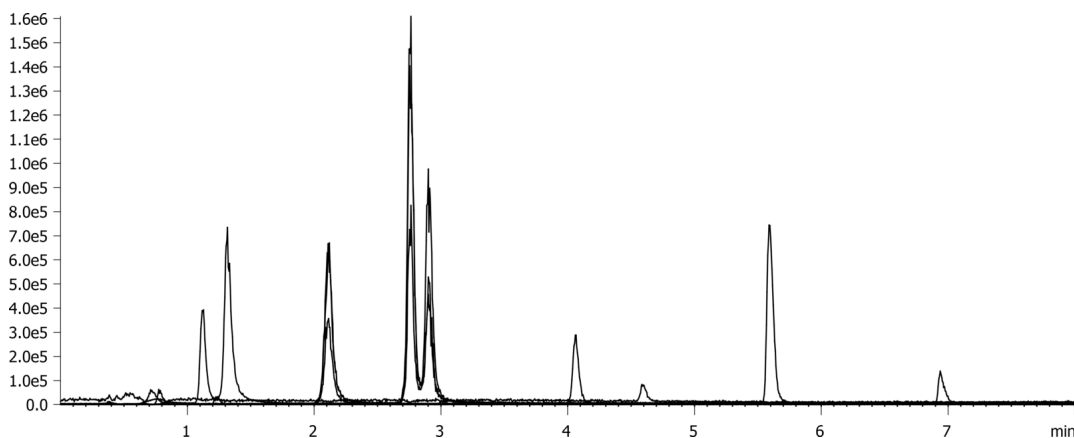
Gradient Profile:	Step No.	Time (min)	Pct A	Pct B
	1	0	97	3
	2	7	10	90

Flow Rate: 0.3 mL/min

Col. Temp.: 30 °C

Detection: Tandem Mass Spec (MS-MS) @ (ambient)

Detector Info: API 4000



ANALYTES:

- 1 succinic acid
- 2 Methylmalonic acid
- 3 Glutaric acid
- 4 Methylsuccinate
- 5 Ethylmalonic acid
- 6 Hippuric acid
- 7 Homovanillic acid
- 8 Suberic acid



Products used in this application:

