

HPLC Application

ID No.: 23587

Antibiotics panel using Luna Omega Polar C18 50x2.1mm

Column: Luna Omega 1.6 um Polar C18 100 A LC Column 50 x 2.1 mm, Ea

Dimensions: 50 x 2.1 mm ID

Order No: 00B-4748-AN

Elution Type: Gradient

Eluent A: 10mM Ammonium formate + 0.1% formic acid

Eluent B: Acetonitrile with 0.1% formic acid

Gradient Profile:	Step No.	Time (min)	Pct A	Pct B
	1	0	100	0
	2	0.5	100	0
	3	5	5	95
	4	5.1	100	0

Flow Rate: 500 µL/min

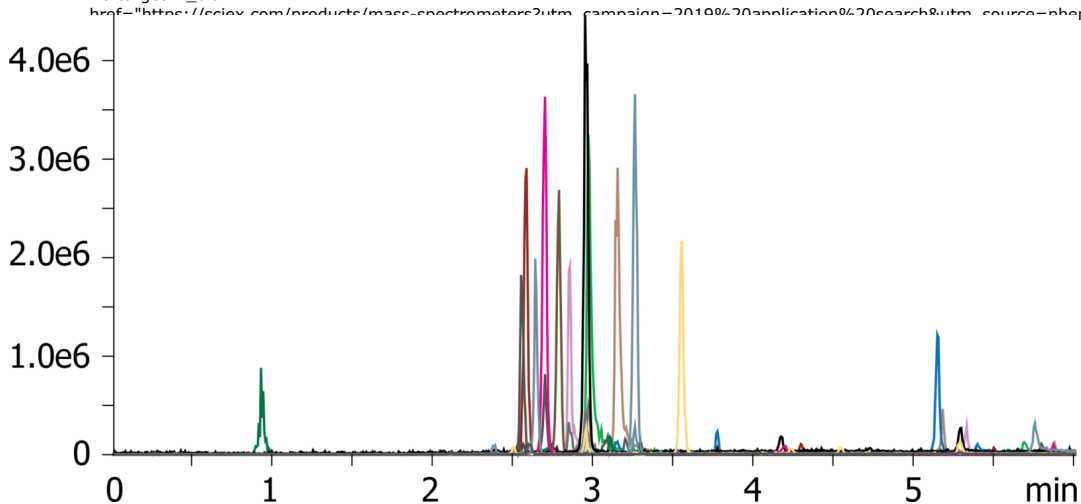
Col. Temp.: 40 °C

Detection: Tandem Mass Spec (MS-MS) @ (450 °C)

Detector Info: SCIEX<



Products used in this application:



Antibiotics panel using Luna Omega Polar C18 50x2.1mm

ANALYTES:

- 1 SULFAGUANIDINE
- 2 SULFADIAZINE
- 3 CEFALEXIN
- 4 LINCOMYCIN
- 5 AMOXICILLIN
- 6 SULFATHIAZOLE
- 7 SULFAPYRIDINE
- 8 CEFAZOLIN
- 9 SULFAMERAZINE
- 10 CIPROFLOXACIN
- 11 SULFAMETHAZINE
- 12 SULFAMONOMETHOXINE
- 13 EnroFloxacin
- 14 DIFLOXACIN
- 15 CHLORTETRACYCLINE
- 16 SULFAMETHOXAZOLE
- 17 Florfenicol
- 18 SULFAQUINOXALINE
- 19 OXACILLIN
- 20 SULFADIMETHOXINE

