

Catecholamines in negative mode using Luna Omega Polar C18 100x2.1mm

Column: Luna Omega 1.6 um Polar C18 100 A LC Column 100 x 2.1 mm, Ea

Dimensions: 100 x 2.1 mm ID

Order No: 00D-4748-AN

Elution Type: Gradient

Eluent A: Water with 0.1% formic acid

Eluent B: Acetonitrile with 0.1% formic acid

Gradient Profile:	Step No.	Time (min)	Pct A	Pct B
	1	0	100	0
	2	3	10	90
	3	3.1	100	0

Flow Rate: 300 µL/min

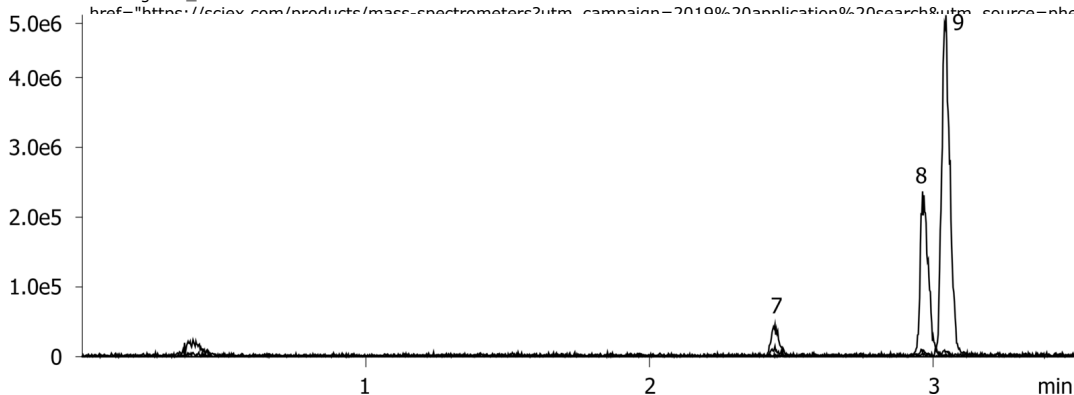
Col. Temp.: 25 °C

Detection: Tandem Mass Spec (MS-MS) @ (450 °C)

Detector Info: SCIEX



Products used in this application:



ANALYTES:

- 1** Vanillylmandelic acid (VMA)
Retention Time: 2.44 min
- 2** 5-Hydroxyindoleacetic acid (5-HIAA)
Retention Time: 2.96 min
- 3** Homovanillic acid (HVA)
Retention Time: 3.05 min

