

HPLC Application

ID No.: 23686

Organic acids using Luna Omega 1.6u PS C18 50x2.1mm

Column: Luna Omega 1.6u PS C18 100A, LC Column 50 x 2.1 mm, Ea

Dimensions: 50 x 2.1 mm ID

Order No: 00B-4752-AN

Elution Type: Gradient

Eluent A: Water with 0.1% formic acid

Eluent B: Acetonitrile with 0.1% formic acid

Gradient Profile:	Step No.	Time (min)	Pct A	Pct B
	1	0	100	0
	2	5	50	50
	3	5.1	100	0
	4	7	100	0

Flow Rate: 0.5 mL/min

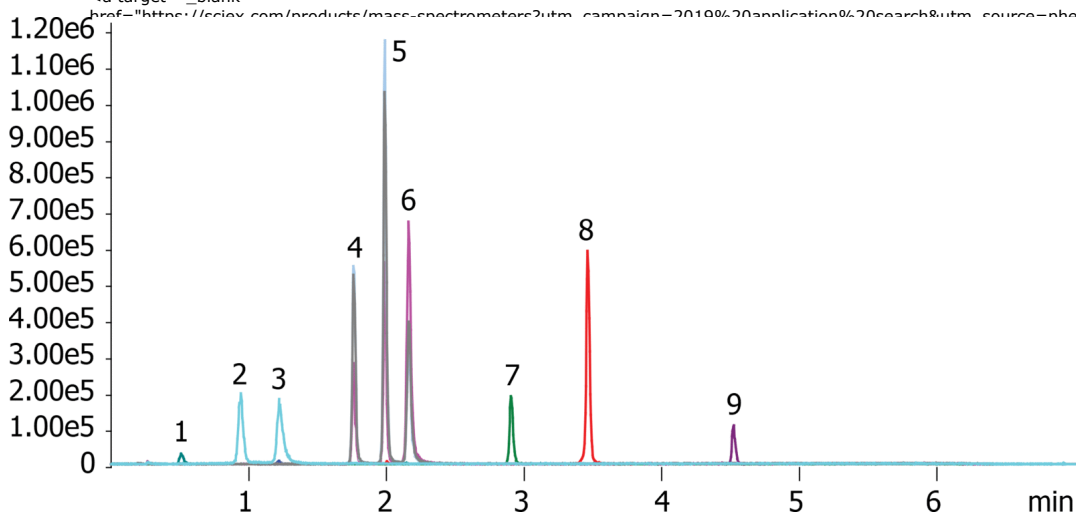
Col. Temp.: ambient

Detection: Tandem Mass Spec (MS-MS) @ (ambient)

Detector Info: SCIEX<



Products used in this application:



ANALYTES:

- 1 Lactic acid
Retention Time: 0.51 min
- 2 Succinic acid
Retention Time: 0.94 min
- 3 MMA
Retention Time: 1.22 min
- 4 Glutaric acid
Retention Time: 1.76 min
- 5 Ethylmalonic acid
Retention Time: 1.98 min
- 6 MEthyl succinate
Retention Time: 2.15 min
- 7 Hippuric acid
Retention Time: 2.9 min
- 8 Suberic acid
Retention Time: 3.45 min
- 9 Sebacic acid
Retention Time: 4.51 min

©2020 Phenomenex Inc. All rights reserved.

For more information contact your Phenomenex Representative at info@phenomenex.com



Phenomenex products are available worldwide.

www.phenomenex.com

info@phenomenex.com