

HPLC Application

ID No.: 23838

Rapid Analysis of 23 PFASs by UHPLC-MS/MS using Luna[®] Omega 1.6 μ m PS C18

Column: Luna Omega 1.6u PS C18 100A, LC Column 100 x 2.1 mm, Ea

Dimensions: 100 x 2.1 mm ID

Order No: 00D-4752-AN

Elution Type: Gradient

Eluent A: 5 mM Ammonium Acetate/Water

Eluent B: Acetonitrile

Gradient Profile:	Step No.	Time (min)	Pct A	Pct B
	1	0	60	40
	2	0.5	60	40
	3	3	10	90
	4	3.1	0	100
	5	4	0	100

Flow Rate: 0.55 mL/min

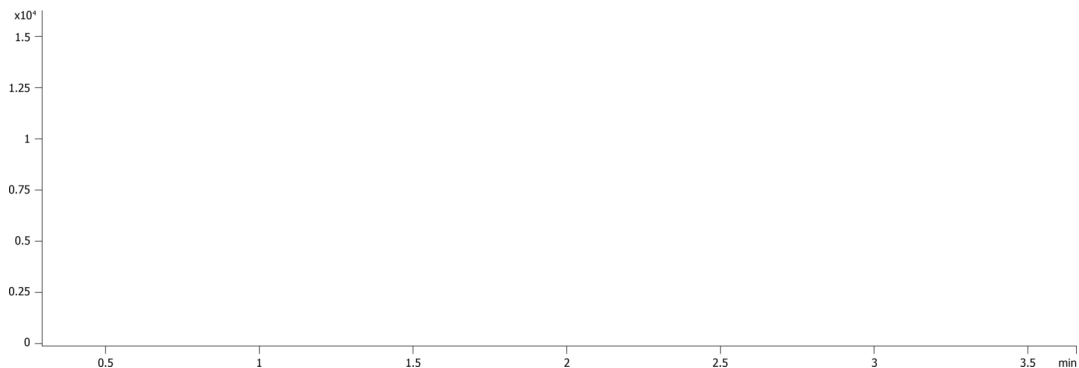
Col. Temp.: 40 °C

Detection: Tandem Mass Spec (MS-MS) @ (ambient)

Detector Info: Agilent 6460 QQQ
23838



Products used in this application:



Rapid Analysis of 23 PFASs by UHPLC-MS/MS using Luna[®] Omega 1.6 μ m PS C18

ANALYTES:

- 1 6:2 FTS
- 2 8:2 FTS
- 3 EtFOSA
- 4 EtFOSE
- 5 FOSA
- 6 MeFOSA
- 7 MeFOSE
- 8 PFBA
- 9 PFBS
- 10 PFDA
- 11 PFDoA
- 12 PFDS
- 13 PFHpA
- 14 PFHpS
- 15 PFHxA
- 16 PFHxS
- 17 PFNA
- 18 PFOA
- 19 PFOS
- 20 PFPeA
- 21 PFTeDA
- 22 PFTrDA
- 23 PFUdA

