

Chiral Separation of Nicardipine on Lux 5µm i-Cellulose-5

Column: Lux® 5 µm i-Cellulose-5, LC Column 250 x 4.6 mm, Ea

Dimensions: 250 x 4.6 mm ID

Order No: 00G-4756-E0

Elution Type: Isocratic

Eluent A: 0.1% DEA in Hexane

Eluent B: 0.1% DEA in IPA

Gradient Profile:	Step No.	Time (min)	Pct A	Pct B
	1	0	90	10

Flow Rate: 1 mL/min

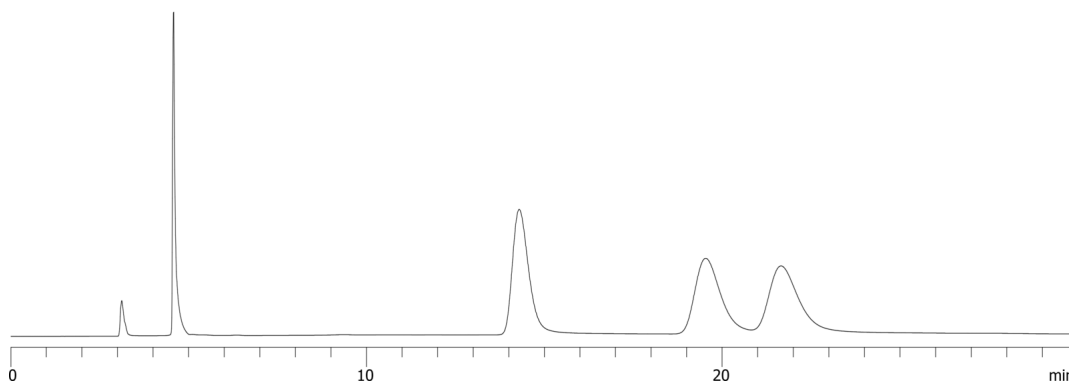
Col. Temp.: ambient

Detection: UV-Vis Abs.-Variable Wave.(UV) @ 254 nm (ambient)

23891



Products used in this application:



ANALYTES:

- 1 Nicardipine
Retention Time: 14.289 min
- 2 Nicardipine
Retention Time: 19.523 min
- 3 Nicardipine
Retention Time: 21.65 min