

HPLC Application

ID No.: 23907

Infliximab on Yarra SEC-X300

Column: Yarra 1.8 µm SEC-X300 LC Column 150 x 4.6 mm, Ea

Dimensions: 150 x 4.6 mm ID

Order No: 00F-4743-E0-SS

Elution Type: Isocratic

Eluent A: 50 mM Potassium Phosphate, 250 mM KCl, pH 6.8

Gradient	Step No.	Time (min)	Pct A
Profile:	1	0	100

Flow Rate: 0.35 mL/min

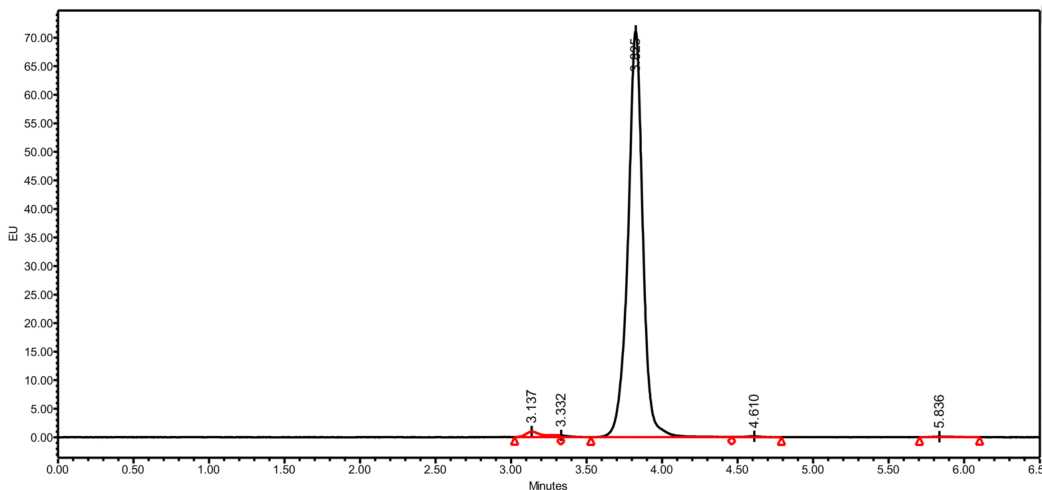
Col. Temp.: ambient

Detection: Fluorescence (FLUOR) @ 280 nm (25 °C)

23907



Products used in this application:



ANALYTES:

- 1 Infliximab

