

# HPLC Application

ID No.: 23964

## Cyclosporin USP on Luna Omega 1.6µm Polar C18 50x2.1mm

**Column:** Luna Omega 1.6 µm Polar C18 100 A LC Column 50 x 2.1 mm, Ea

**Dimensions:** 50 x 2.1 mm ID

**Order No:** 00B-4748-AN

**Elution Type:** Isocratic

**Eluent A:** Acetonitrile, tert-butyl methyl ether, water, and phosphoric acid (430:50:520:1)

Gradient	Step No.	Time (min)	Pct A
Profile:	1	30	100

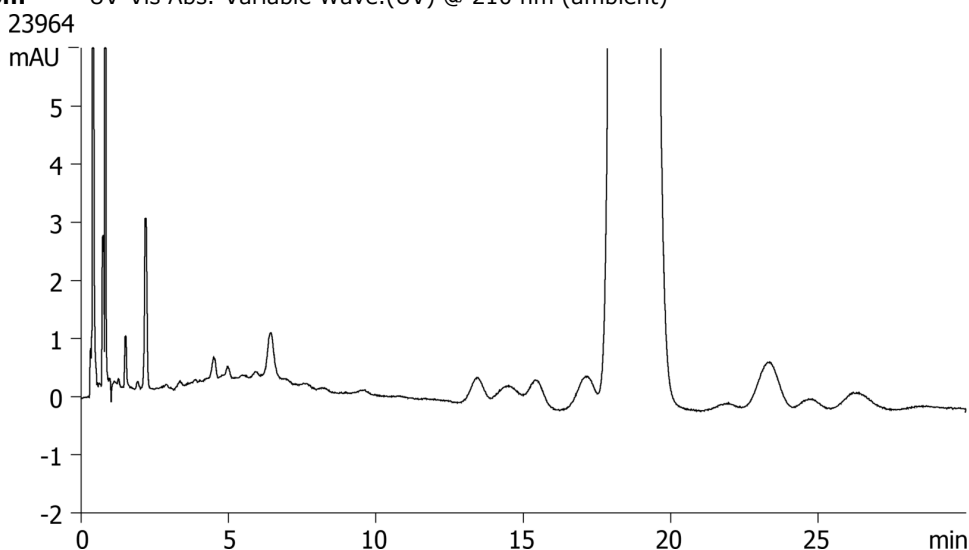
**Flow Rate:** 0.3 mL/min

**Col. Temp.:** 80 °C

**Detection:** UV-Vis Abs.-Variable Wave.(UV) @ 210 nm (ambient)



Products used in this application:



### ANALYTES:

1 Cyclosporin