

Sulfa-Drugs on Luna Omega 3µm Polar C18

Column: Luna® Omega 3 µm Polar C18 100 Å, LC Column 150 x 4.6 mm, Ea

Dimensions: 150 x 4.6 mm ID

Order No: 00F-4760-E0

Elution Type: Gradient

Eluent A: 0.1% Formic acid in Water

Eluent B: 0.1% Formic Acid in Acetonitrile

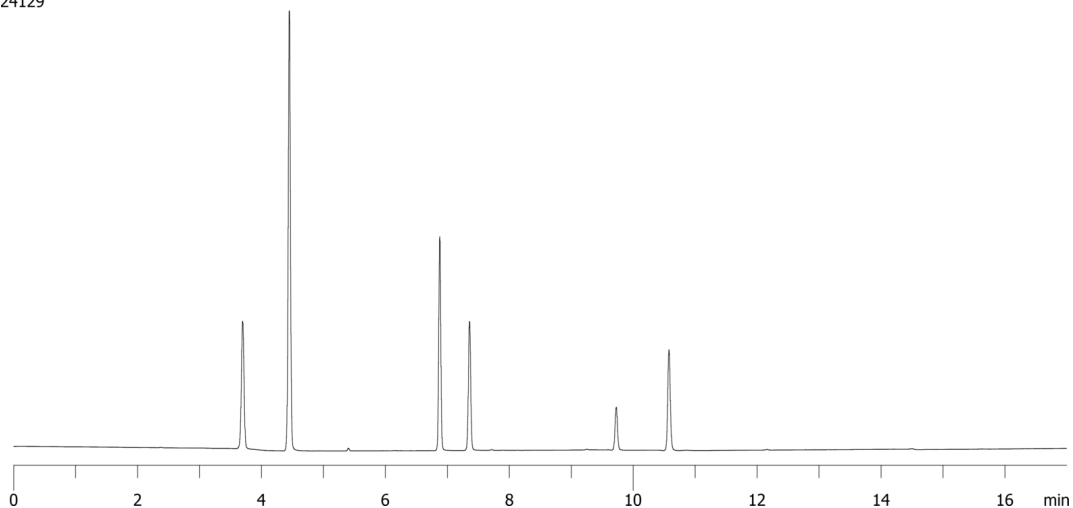
Gradient Profile:	Step No.	Time (min)	Pct A	Pct B
	2	0	75	25
	3	10	35	65

Flow Rate: 1 mL/min

Col. Temp.: ambient

Detection: UV-Vis Abs.-Variable Wave.(UV) @ 254 nm (ambient)

24129



ANALYTES:

- 1** Sulfanilimide
Retention Time: 3.4 min
- 2** Sulfathiazole
Retention Time: 5.7 min
- 3** Sulfamethoxazole
Retention Time: 8.5 min
- 4** Sulfamerizine
Retention Time: 6.1 min
- 5** Sulfaquinoxaline
Retention Time: 9.2 min
- 6** Sulfaguanidine
Retention Time: 2.8 min



Products used in this application:

