

# HPLC Application

ID No.: 3147

## Sugars in Cucumber Juice on Rezex ROA

**Column:** Rezex<sup>™</sup> ROA-Organic Acid H+ (8%), LC Column 300 x 7.8 mm, Ea

**Dimensions:** 300 x 7.8 mm ID

**Order No:** 00H-0138-K0

**Elution Type:** Isocratic

**Eluent A:** 1.6 mM Heptafluorobutyric acid in water

| Gradient Profile: | Step No. | Time (min) | Pct A |
|-------------------|----------|------------|-------|
|                   | 1        | 0          | 100   |

**Flow Rate:** 0.6 mL/min

**Col. Temp.:** ambient

**Detection:** Conductivity @ \_ (ambient)

**Analyst Note:** HPLC from a single injection of compounds added to or naturally present in cucumber juice.

SecurityGuard<sup>™</sup> Guard Cartridge System extends column lifetime.

- SecurityGuard Cartridges, Carbo-H 4 x 3.0mm, 10/Pk Part No.: AJ0-4490

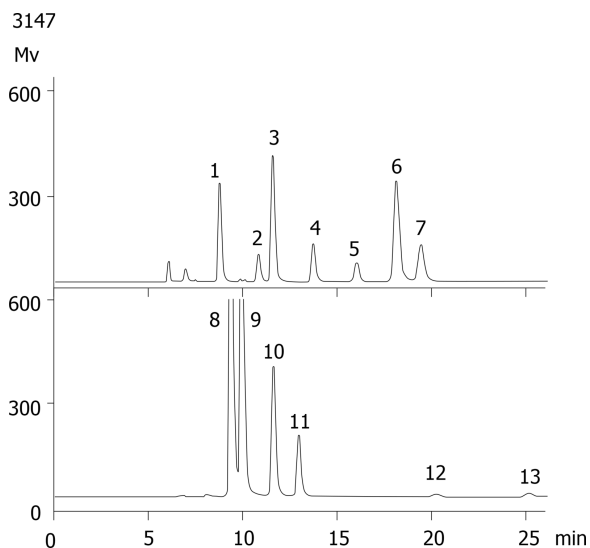
- Holder Part No.: KJ0-4282

**REZEX**<sup>™</sup>  
HPLC COLUMNS for Carbohydrates, Oligosaccharides, and Organic Acid Analysis



Products used in this application:

**REZEX**<sup>™</sup>



## Sugars in Cucumber Juice on Rezex ROA

### ANALYTES:

- 1** Malic acid
- 2** Succinic
- 3** Lactic acid
- 4** Acetic acid
- 5** Propionic acid
- 6** i-Butyric
- 7** Butyric acid
- 8** Glucose
- 9** Fructose
- 10** Erythritol
- 11** Glycerol
- 12** Ethanol
- 13** n-Propanol

