

## Selectivity with SRM 869 - SphereClone vs. Spherisorb Comparison

**Column:** SphereClone<sup>™</sup> 5  $\mu$ m C8 80 A, LC Column 250 x 4.6 mm, Ea

**Dimensions:** 250 x 4.6 mm ID

**Order No:** 00G-4142-E0

**Elution Type:** Isocratic

**Eluent A:** Water

**Eluent B:** Acetonitrile

Gradient Profile:	Step No.	Time (min)	Pct A	Pct B
	1	0	15	85

**Flow Rate:** 2 mL/min

**Col. Temp.:** ambient

**Detection:** UV-Vis Abs.-Variable Wave.(UV) @ 260 nm (ambient)

**Analyst Note:** SecurityGuard<sup>™</sup> Guard Cartridge System extends column lifetime.

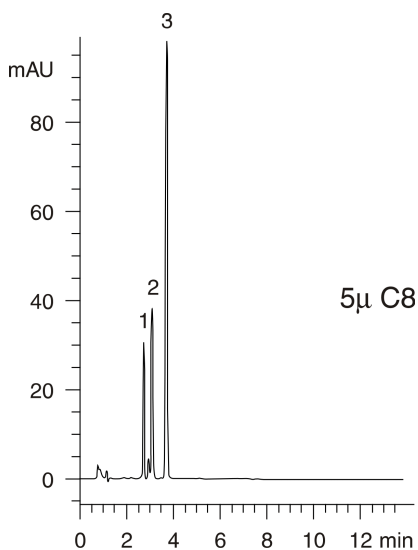
- SecurityGuard Cartridges, C8 4 x 3.0mm, 10/Pk Part No.: AJ0-4290

- Holder Part No.: KJ0-4282



Products used in this application:

**SphereClone<sup>™</sup>**



### ANALYTES:

- 1 Benzo[a]pyrene
- 2 Phenanthro[3,4-c]phenanthrene
- 3 Tetrabenzonaphthalene

