

Biodiesel Glyceride Analysis - PME on ZB-5HT

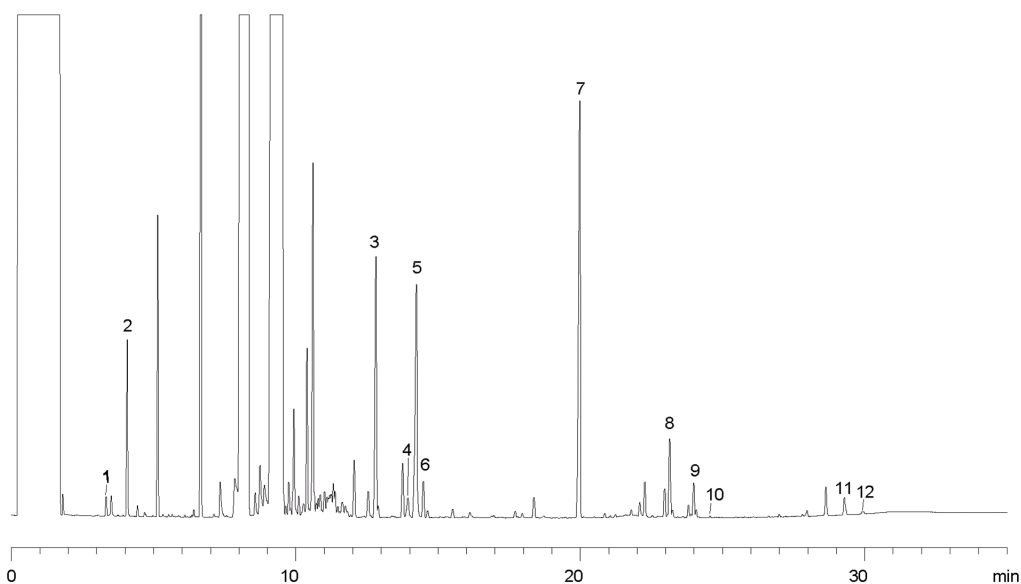
Column: Zebtron™ ZB-5HT, GC Cap. Column 15 m x 0.32 mm x 0.10 μm, Ea
Phase: 5% Phenyl 95% Dimethylpolysiloxane
Dimensions: 15 meters x 0.32 mm x 0.1 μm
Order No: 7EM-G015-02
Oven Profile: 50 °C to 180 °C @ 15 °C/min to 230 °C at 7 °C/min to 370 °C at 10 °C/min for 9 min
Carrier Gas: Constant Flow Hydrogen, 11.3 mL/min
Injection: Splitless :1 1 μL @ 56°C
Detection: Flame Ionization (FID) (380°C)
Analyst Note: Injection used PTV to 350 °C @ 1200 °C/min.
Courtesy of ASG (www.asg-analytik.de), a specialized Biofuel Laboratory!



Products used in this application:



18162



Biodiesel Glyceride Analysis - PME on ZB-5HT

ANALYTES:

- 1 Glycerine
- 2 Butanetriol (internal standard)
- 3 C16:0
- 4 C18:2
- 5 Monoolein
- 6 C18:0
- 7 Tricaprin (internal standard)
- 8 C34
- 9 C36
- 10 C38
- 11 C52
- 12 Triolein

